



# Aktors

Aleksander Reitsakas



# Company

- Established 2006
- Software development and software engineering consultations
- 30+20 employees



# Tehnological competence

- C/C++
- Java / JavaEE
- PHP
- ASP .Net, VB, C#
- MS SQL, Oracle, PostgreSql, Sybase
- X-Road
- Windows, Linux/Unix



# Major achievements

- card payment interfacing systems
- banking applications
- X-Road (Estonian state information exchange system)
- Azerbaijan e-governance system
- ERP and different web-based applications
- NATO Alliance Ground Surveillance Programme



# customers

- Estonian Information System's Authority
- SEB
- Nets Estonia
- Estonian eHealth Foundation
- EVRY (Norway)
- Tieto Finland
- Ministry of ICT of Azerbaijan
- NAGSMA (NATO agency)



# Bigger Projects

- SEB, Amex/Banknet/Visa Gateways
- TFM, FastCounter, EDB Teller
- x-Road
- Fenix



# SEB ATM Server

- Control ATMs of SEB
- Mediates messages between ATM, bank core and CCB
- 24x7
- Solaris, C++, Oracle
- In use from 1995



# SEB ATM Server 2

- Built as Framework
- Over 300 interacting processes
- Own transaction dispatcher





# Amex/Banknet/Visa Gateways

- Conversion between different standards (ISO 8583 v87, v93)
- 24x7
- HP-UX, C++, Oracle, IBM MQ Series



# TFM & jTFM – Task Flow Management

- Environment for application software development in a Client-Server Architecture
- Mostly used in bank and insurance company applications
  - ~115 000 run time licences
    - Unibanco (Brazil)
    - Fortis (Belgium)
    - ING (Belgium)
    - BBVA (Spain) – Java version
    - ...
- Written in C/C++, ported to Java as well

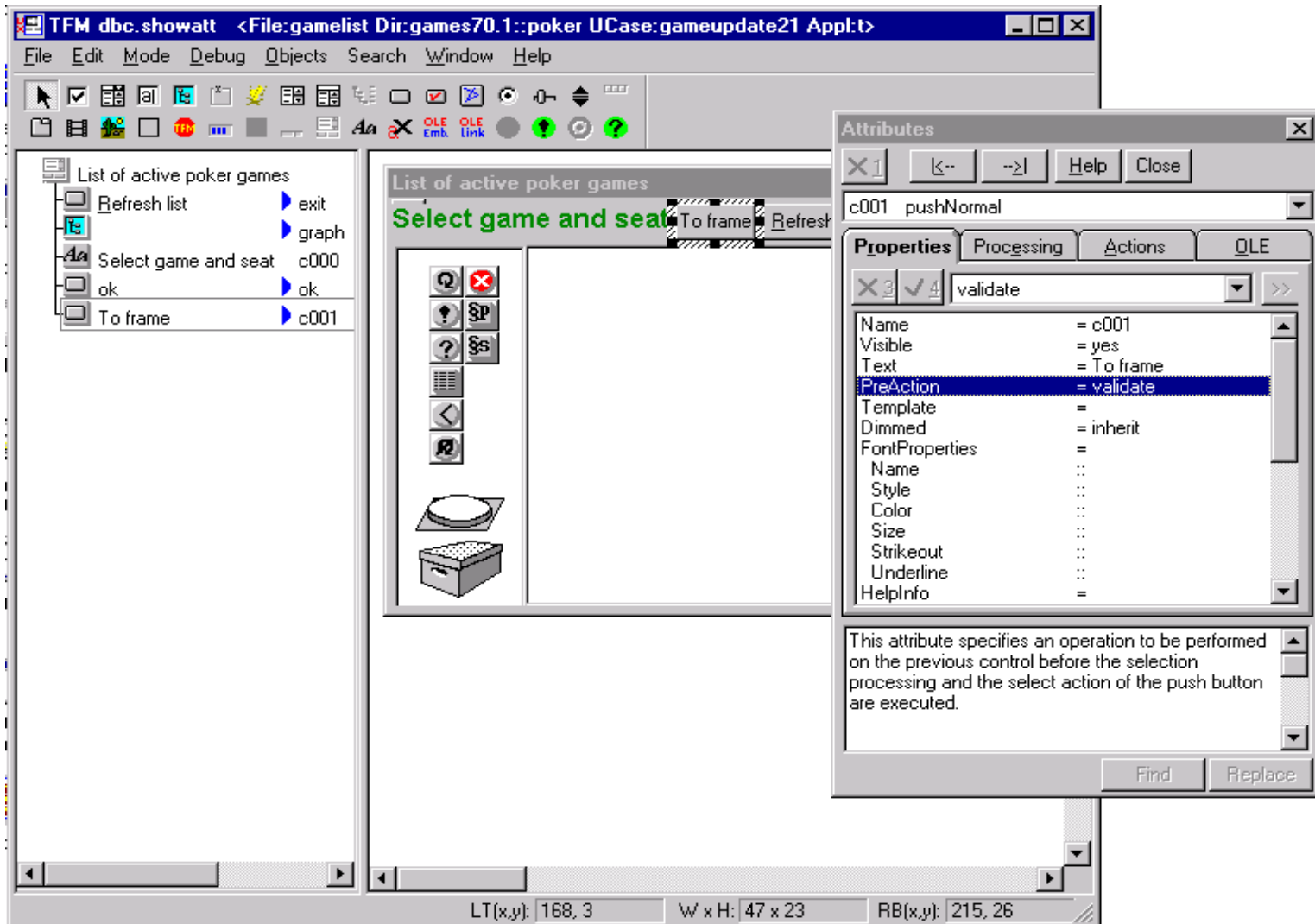


# TFM Application builder


- Developing TFM application systems means creating a set of "building blocks", TFM objects
- Creators
  - The Dialog Model Creator
  - The Dialog Box Creator
  - The Menu Set Creator
  - The Subroutine Creator
  - The OLE Server description Creator



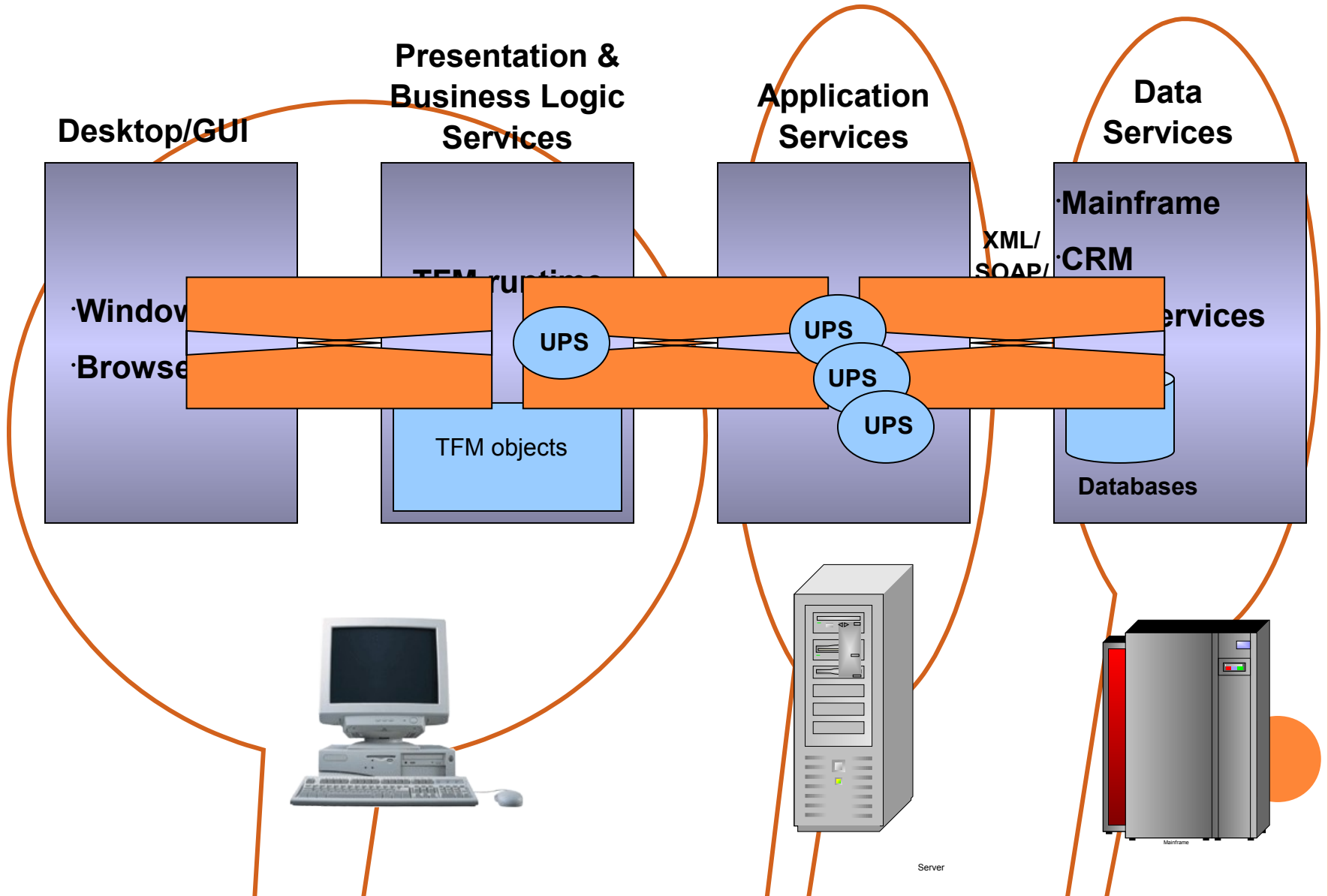
# TFM Dialog Box Creator



# TFM Runtime Environment

- The central and mandatory part of all TFM systems. Manages the use of application objects.
    - Exploits the Windows GUI
    - Bitmaps and animation's
    - Business graphics such as bar-charts, pie-charts, etc.
    - Electronic Forms
    - Dynamic Data Exchange (DDE)
    - OLE Automation
    - TCP/IP and NamedPipes communication
- 

# TFM Architecture



# FastCounter

- Web-based solution providing rapid “over the counter” services in branches for private and business customers and backline services for management of branches.
- It is multilingual and supports multiple currencies.
- Clients
  - CBQ (Qatar)
  - DBS (Singapore)



# FastCounter services provide support for

- Current and Savings accounts
- Fixed deposits
- Foreign currency accounts
- Account information, standing orders and statements
- Utility payments
- Foreign currency exchange
- Account transfers
- Card services
- Loan repayments
- Customer information updates
- ...





# Backline services provide support for

... central and/or local management of branches for set-up and management of:

- Branch organisation and staff roles
- Business rules and staff authorisation
- Cash-boxes and vaults
- Overrides and alerts
- Service fees and commissions
- Electronic journal
- End of day balancing and reporting
- Store and forward processing
- ...

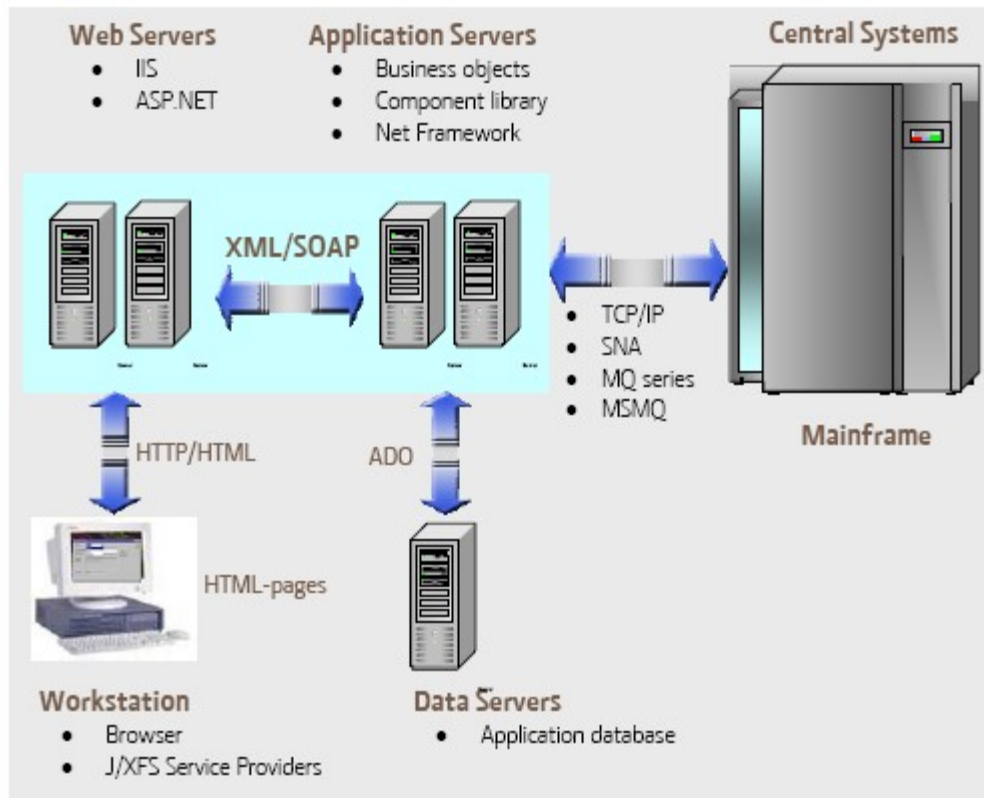


# FastCounter Architecture

- FastCounter is a component based multi-tier application based on Web-technology and Microsoft .NET architecture.
- This allows financial institutions to build reliable and scalable thin-client solutions and to benefit from future .NET developments
- FastCounter can be customised for the specific business processes of any financial institution



# FastCounter Architecture

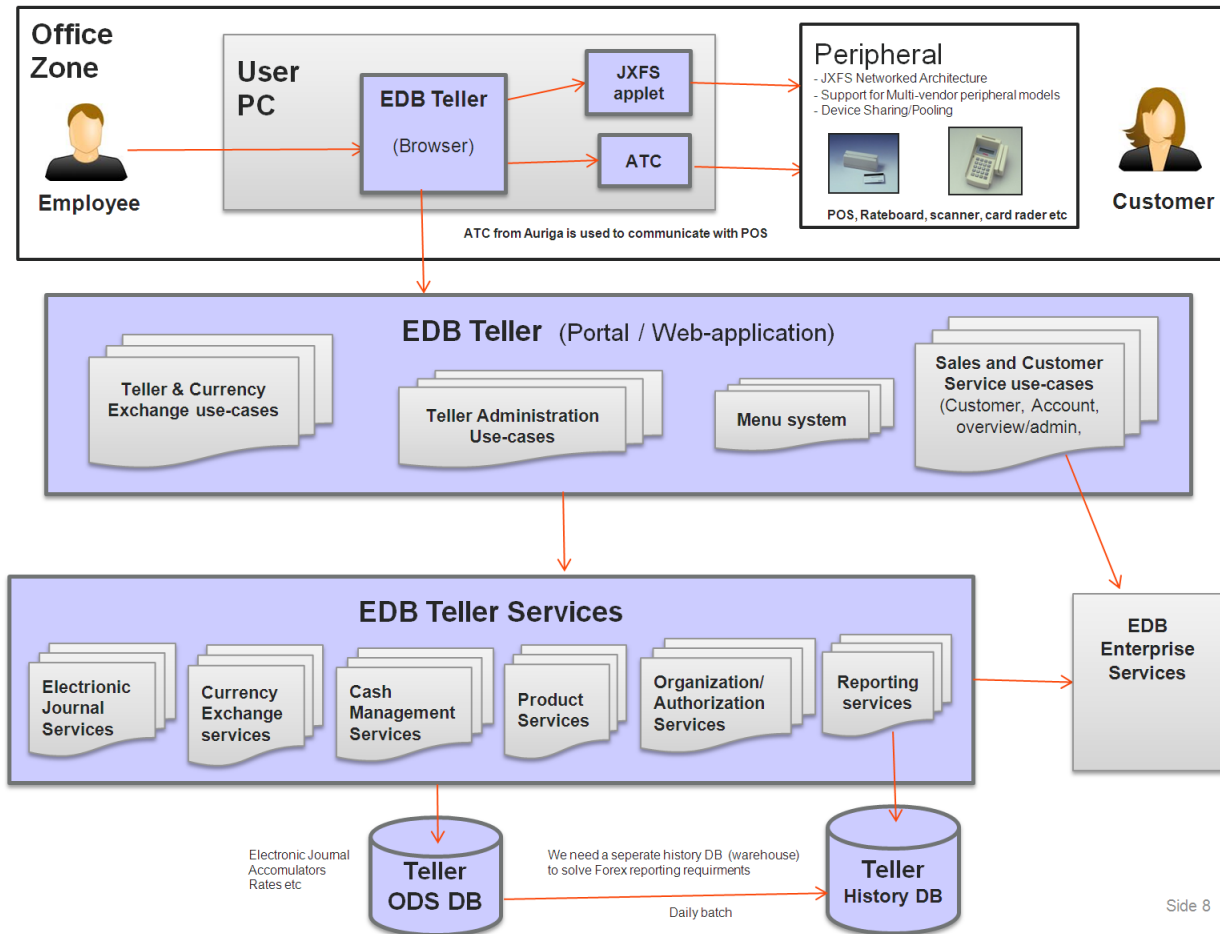


# EDB Teller

- Teller functions component library
- Multilayered architecture (5 layers)
- JavaEE
- RAD
- Under development...



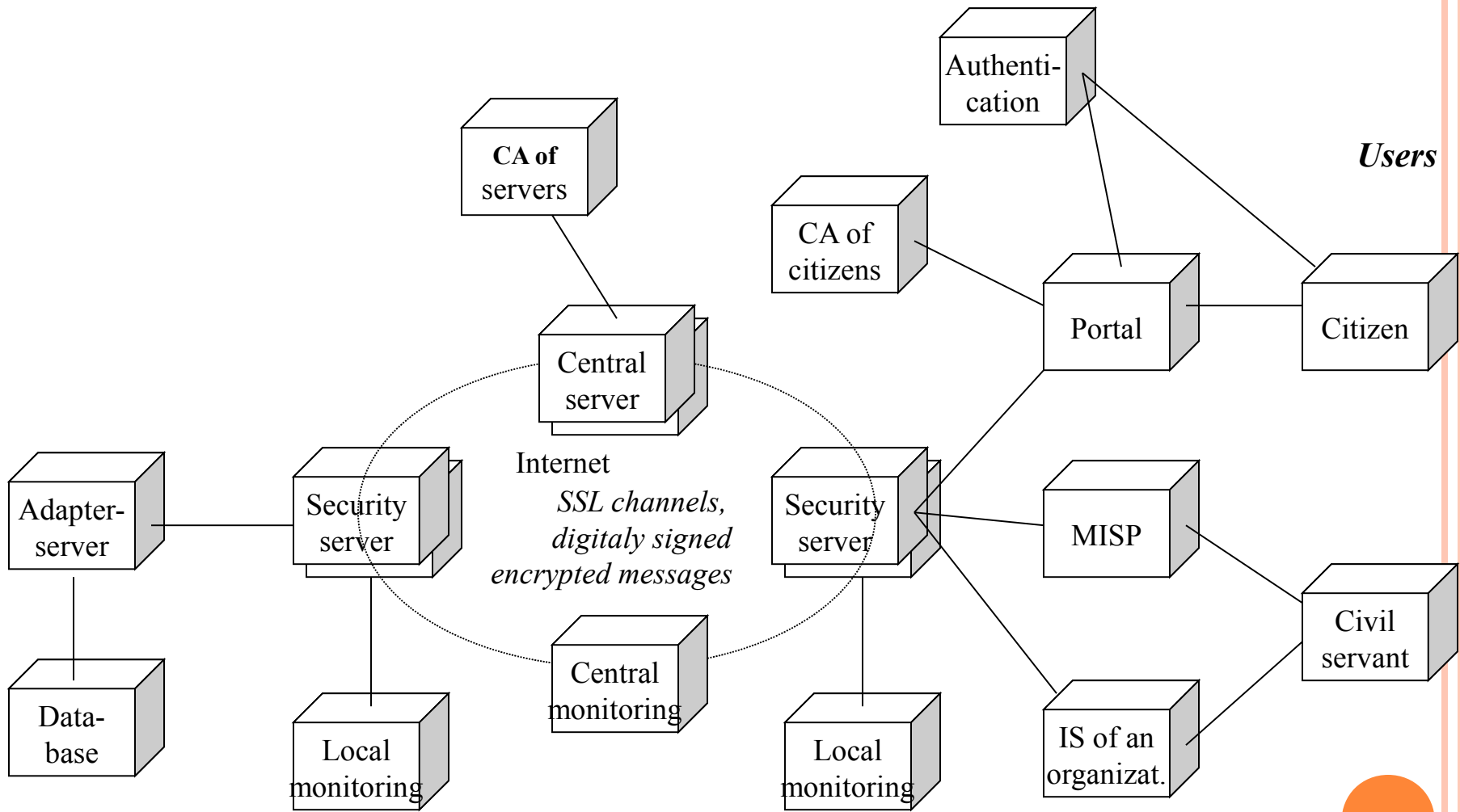
# EDB Teller - architecture



# X-Road

- First version 2001
- Present activities:
  - Support and further development of Portals
  - Adapter servers
  - Integration with Healthcare system
  - Export activities





**Database  
processors**



# Fenix



- Fenix is mission critical ERP system for StoraEnso papermills
- Connects StoraEnso papermills over the world in one system





# Fenix - users



## External

PARTNERWEB  
more than 150  
Partner  
customers of  
PB and FP division



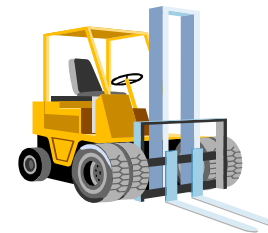
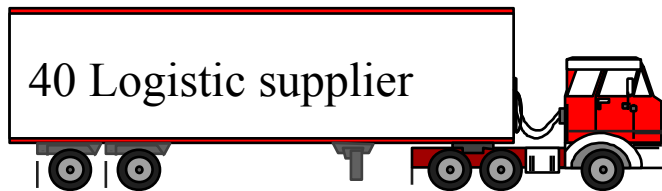
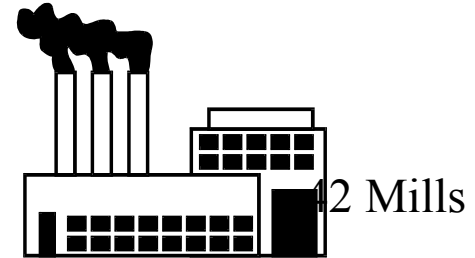
E-business  
solutions



ca. 7 million messages  
monthly



## Internal



17 SETD  
sites



# Fenix - architecture

